

# BRANDMODELS

## MICHAEL JUSTIN

HAIR: WHITE/GRAY

EYES: BLUE

HEIGHT: 6' 1"

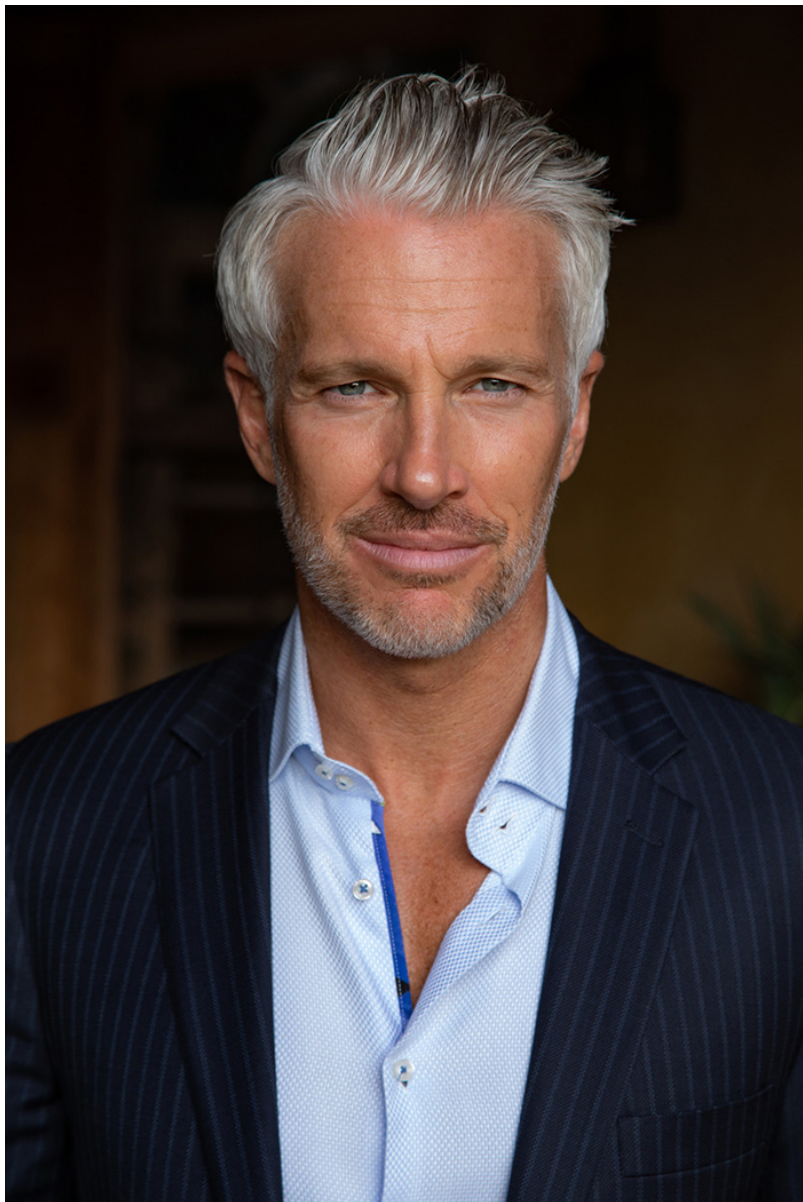
INSEAM: 32

WAIST: 32

SHIRT: 15.5/32

SUIT: 40

SHOE: 12















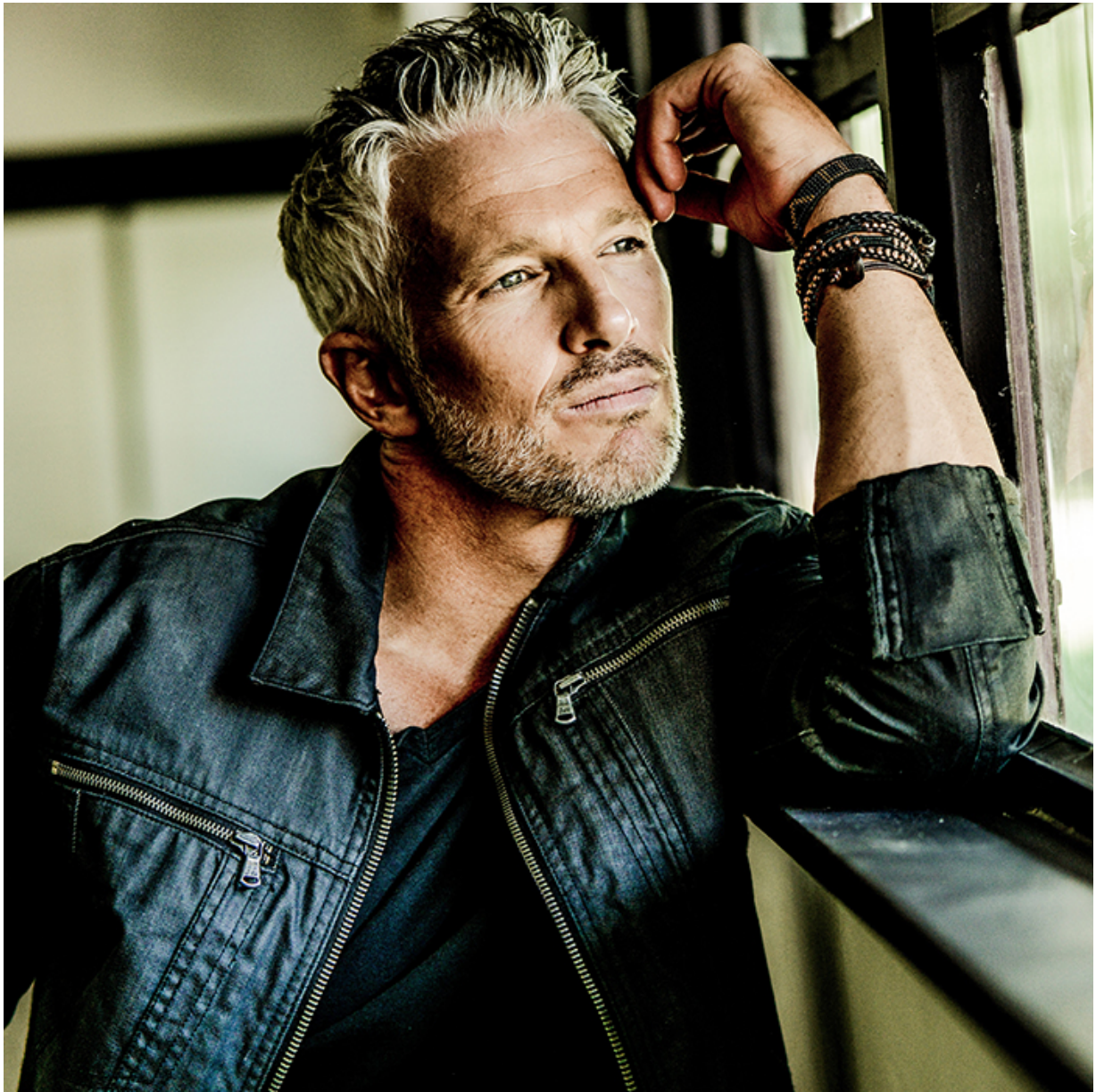




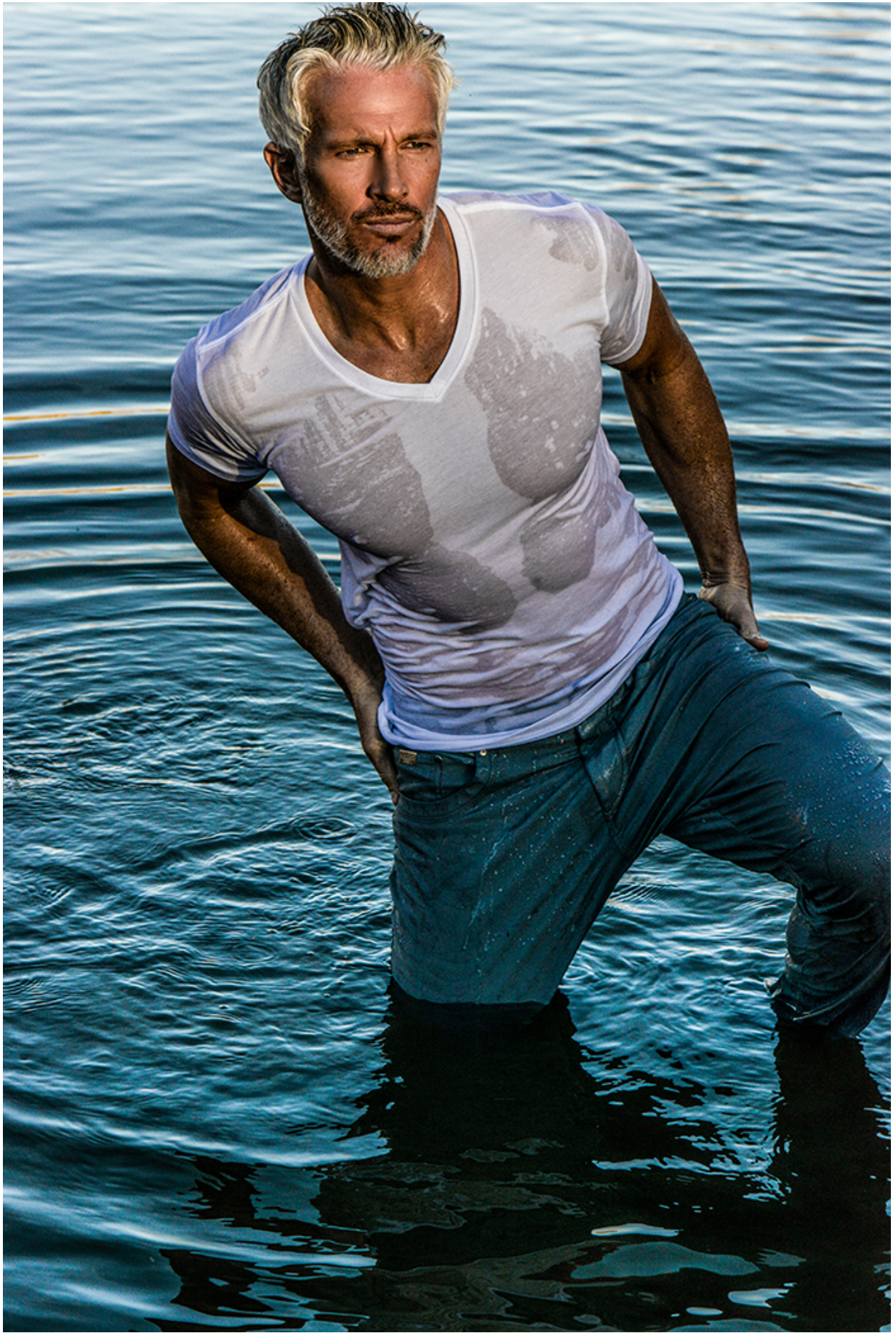




































# Suite Dreams

## PARIS AND THE FOUR SEASONS GEORGE V HOTEL

BY PHYLIS LANE & KIMBERLEY ASHLEY

**I**t's a cool May evening. Just as the clock is about to strike midnight, I glance at the vivid, purple and gold journal lying at the edge of my desk. Beckoning for my attention is the page I had titled "Top Bucket List Moments" on a quiet New Year's Eve. Scribbled across the page I see, "Go to Paris for the weekend and stay at the George V Hotel." At the time, I made this note, I knew nothing about the Four Seasons George V Hotel. I had simply seen a picture of it online and felt as though it held the most romantic viewpoint of the Eiffel Tower I'd ever witnessed. As a professional photographer, images speak directly to me through my heart. It had been decades since I was last in Paris and that image was saying to me, "look no further." I had found the most romantic spot in the City of Love and it was time to return.

I subsequently discovered that not only was the George located just steps away from the Champs-Élysées — the most fashionable street in Paris, lined with the best designer stores — it is also the hotel most preferred by the fashion industry during Couture Week. It is a place to see and be seen. As a fashion photographer keenly attuned to beauty, I can see why. Its elegant rooms possess private terraces with commanding views of the City of Light. The Georges' romantic spirit of elegance, nestled in the arms of this magnificent city, was calling me. I have learned in life, you need not wait to say "yes" to what calls to you, so I said "Oui" to Paris for the weekend, and from the moment my driver from the hotel greeted me with, "Bon jour Phylliseeeeees" (to my fresh glimpse of Gustave Eiffel's tower and the lovely trees lining the Tuileries), I knew in my heart I was "home."

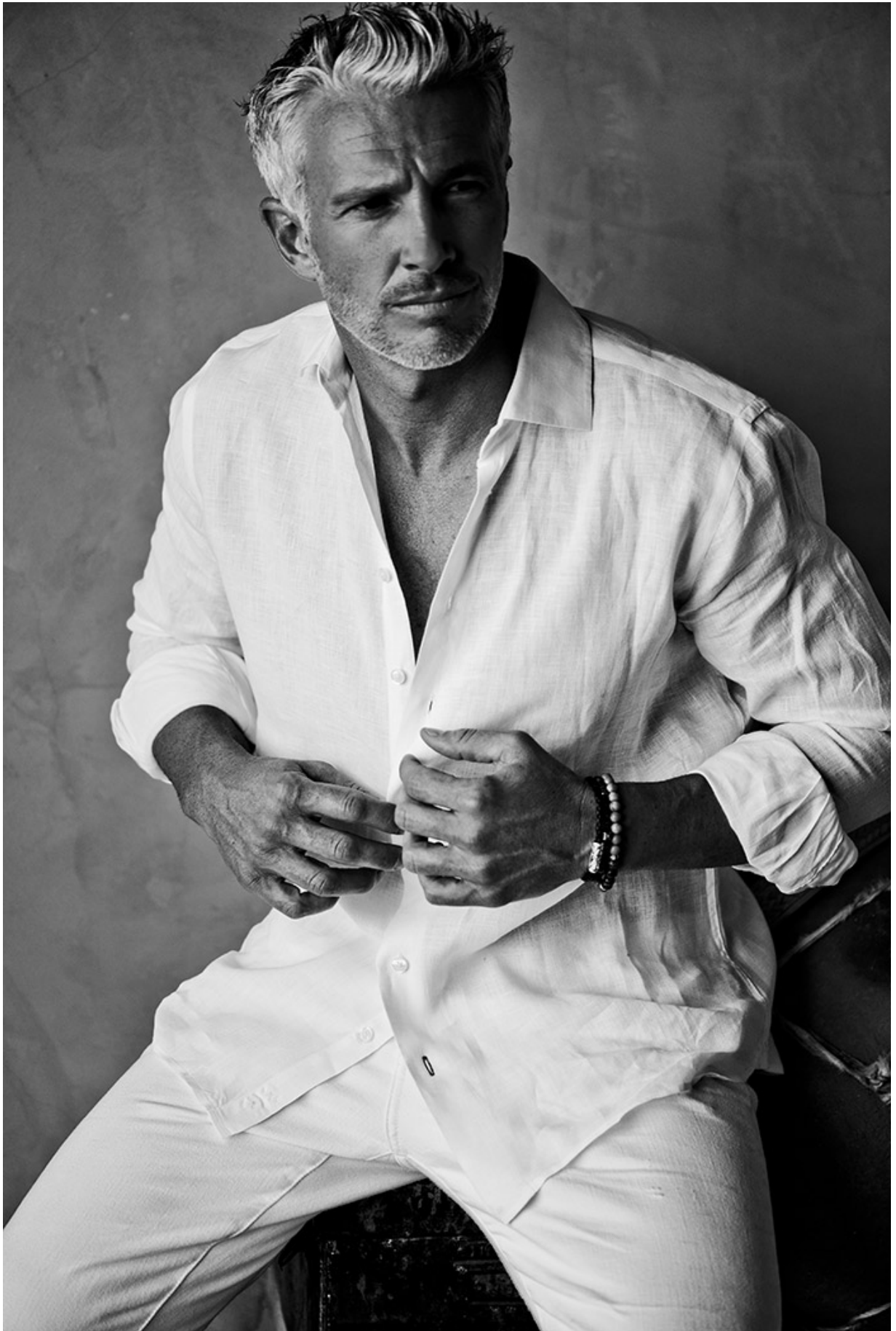


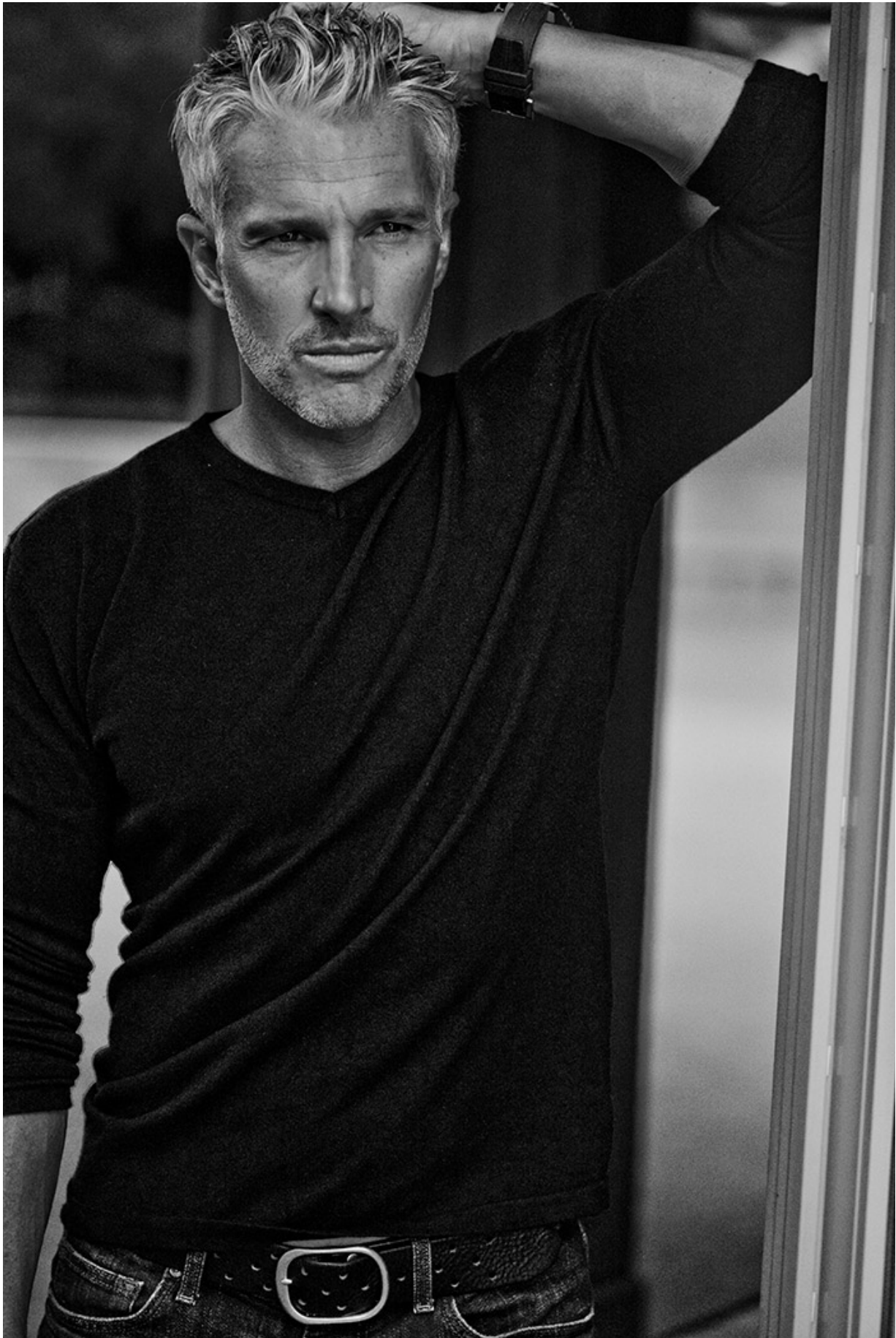


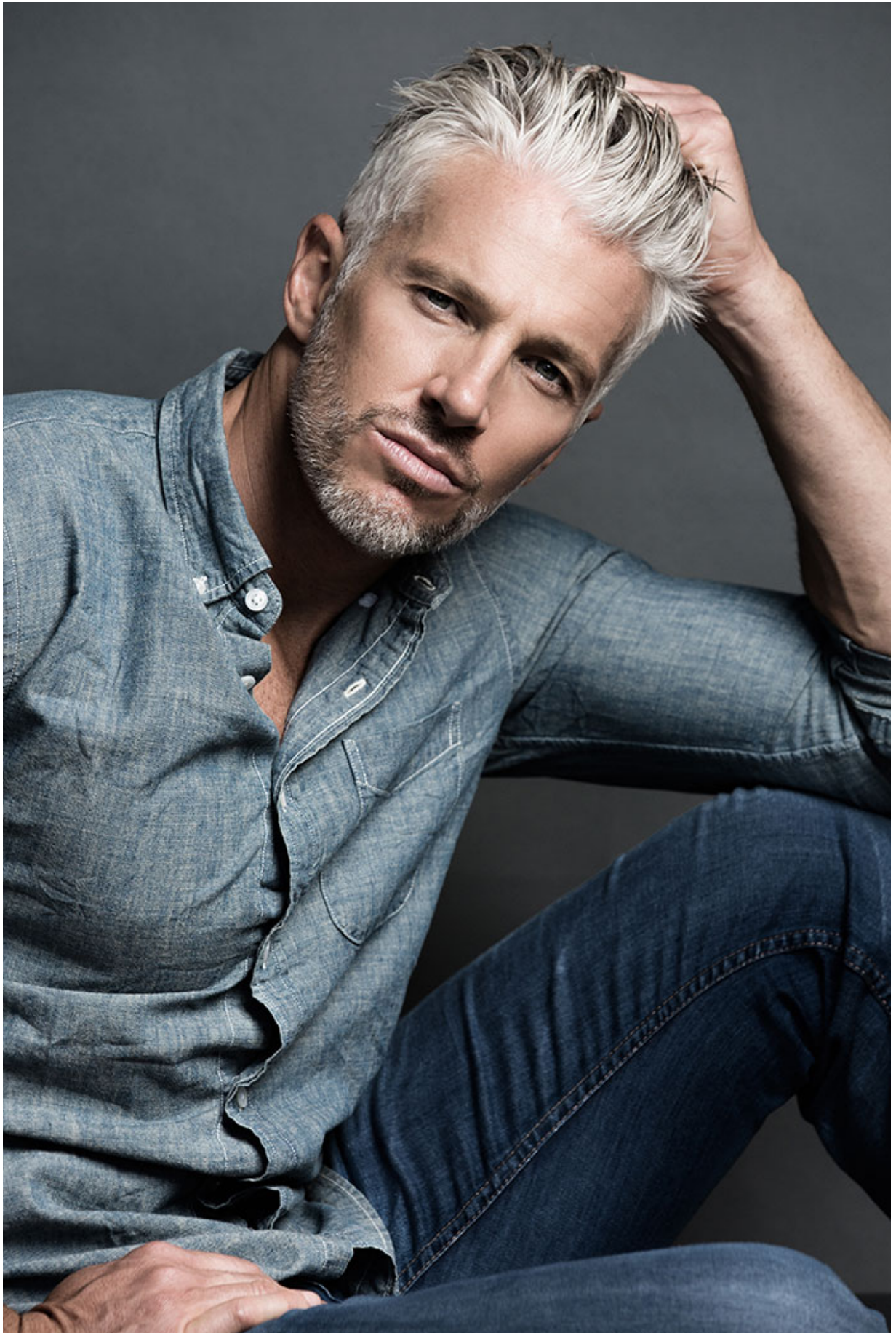


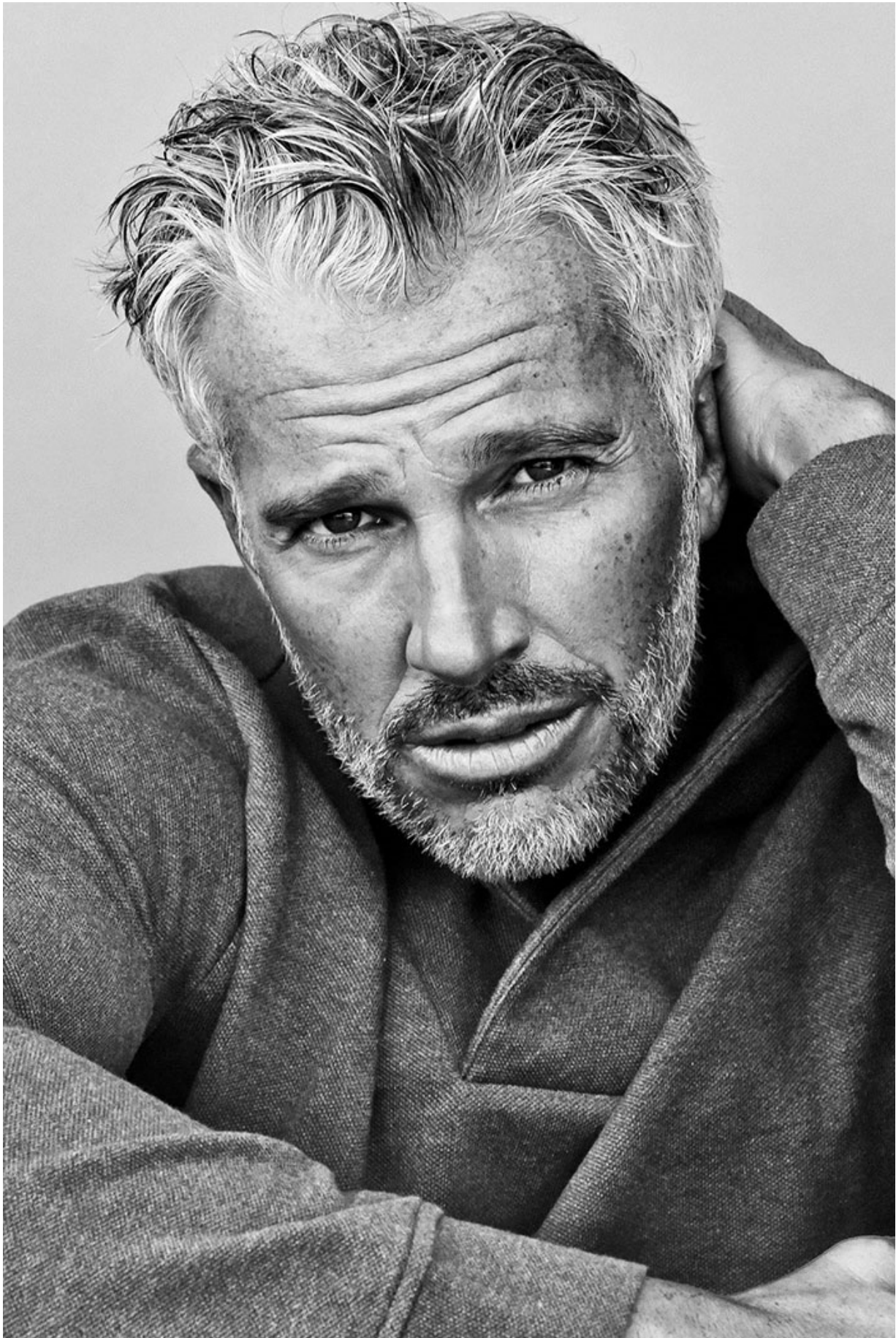
 UNDERGENTS















Long Sleeve Henley by Vince  
Bomber Jacket by Madison Supply  
Black Twill Cargo Jogger Pants by Vince  
Double Face Scarf by Saks Fifth Avenue

# Into the Wild

UNITED STATES

photography: Phyllis Lane  
make-up & hair: Diane Aiello  
fashion design: Burberry and Salvatore Ferragamo  
wardrobe styling: Diane Aiello  
assistant: Neal Mei  
model: Michael Justin













