

BRANDMODELS

TAYLOR HORTON

HAIR: BROWN

EYES: BROWN

HEIGHT: 5' 11"

CHEST: 33

WAIST: 26

HIPS: 35

DRESS: 4/6

SHOE: 9











A woman with dark, curly hair is shown from the waist up, wearing a bright pink V-neck t-shirt and blue jeans. She is looking slightly to her left with a gentle smile. The background is a plain, light-colored wall.

9000V Junior V-Neck Tee





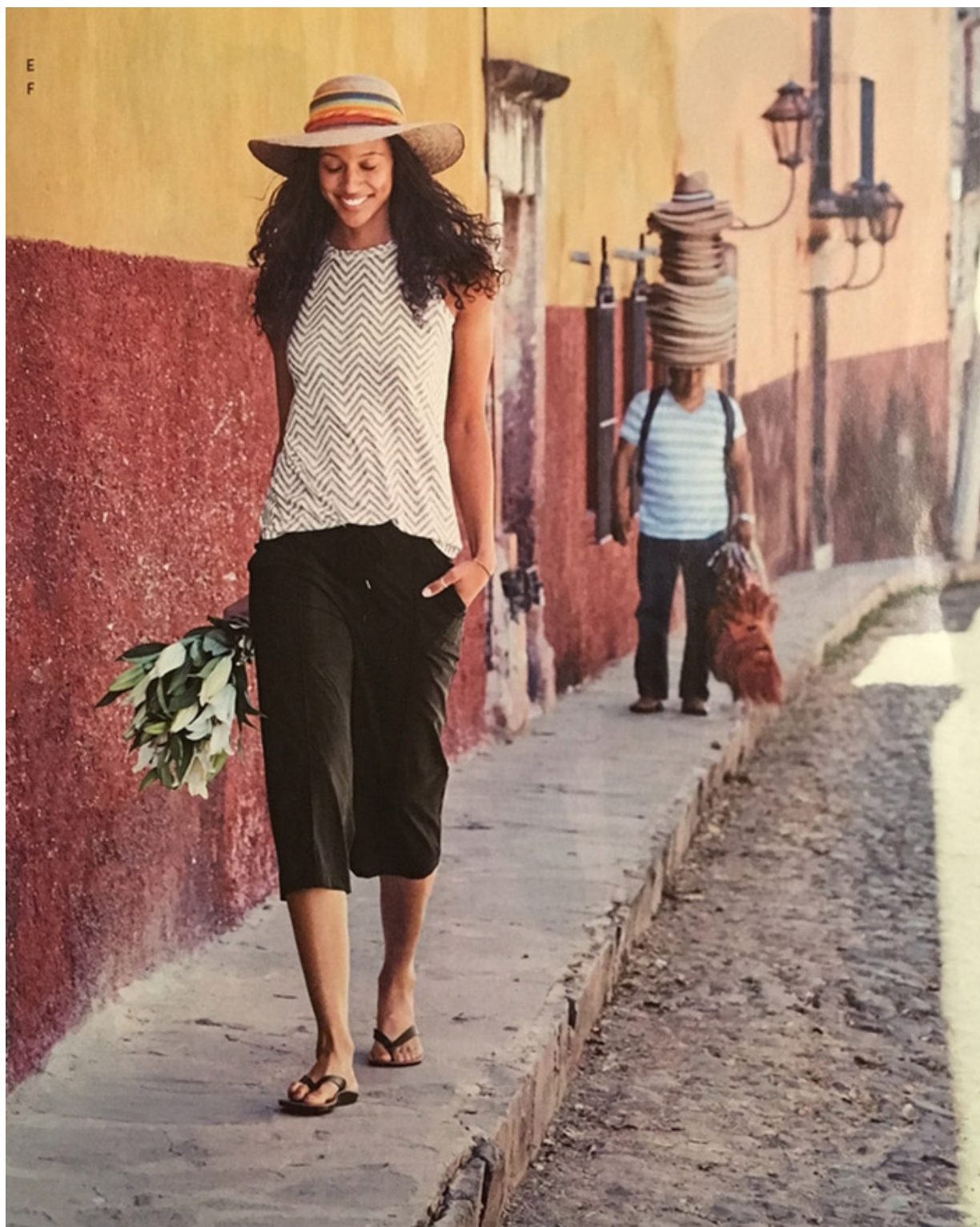
MIDI LENGTH

RIBBON STRIPES SKIRT









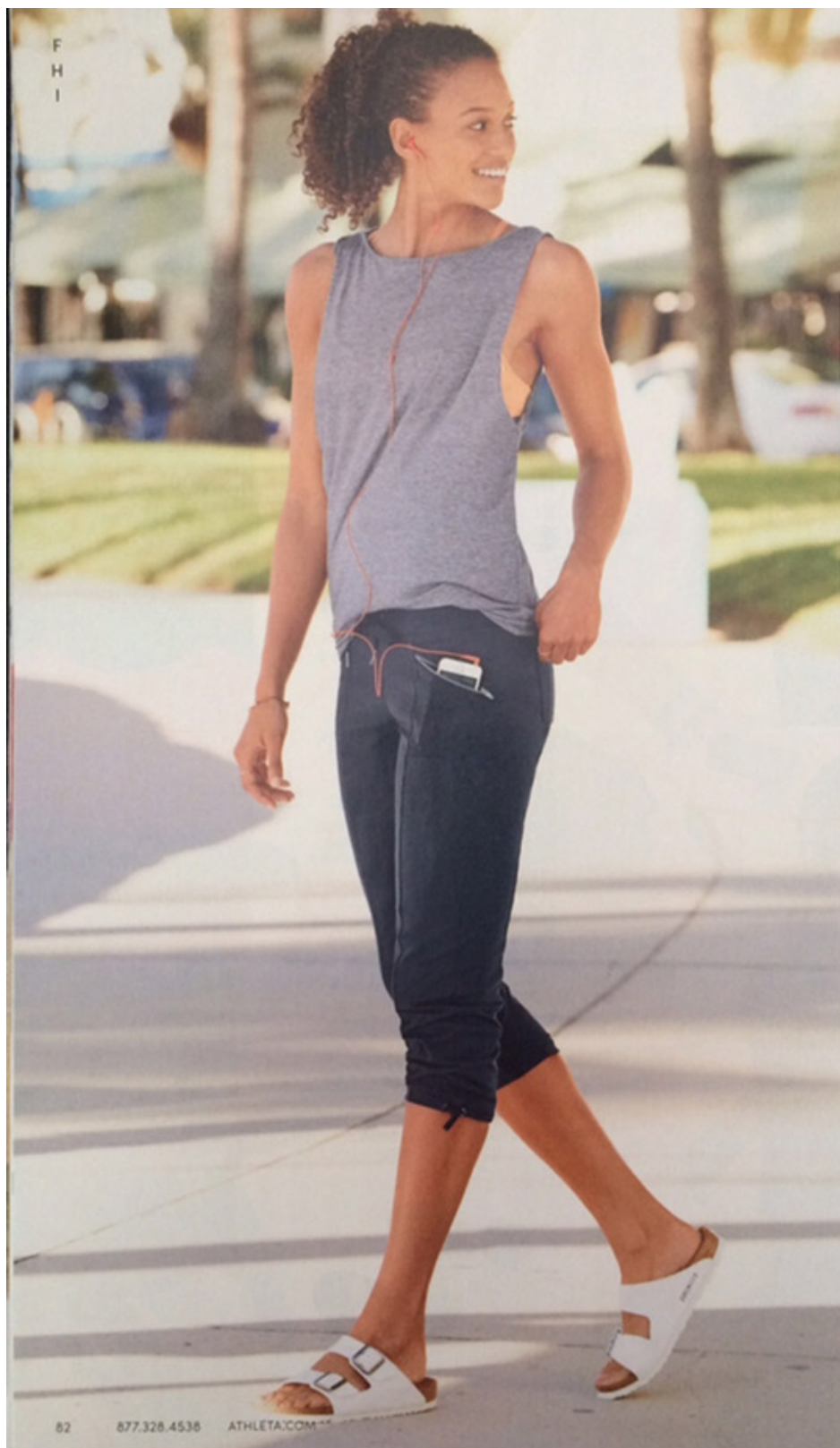






B
D





THE metro

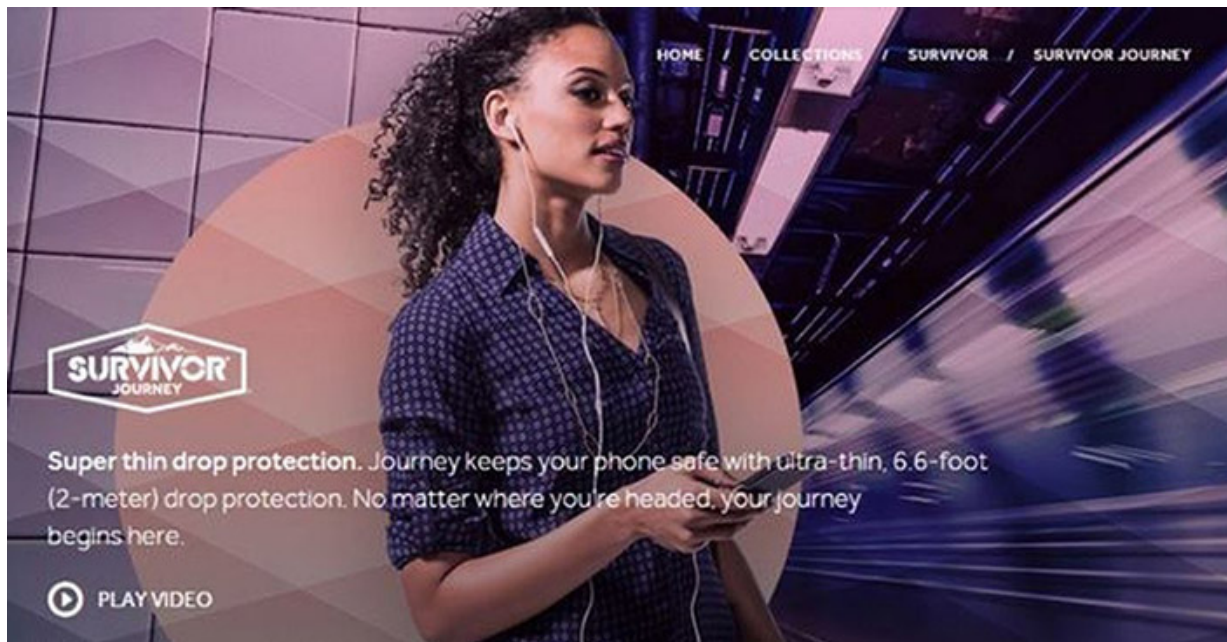
*Our most
modern pant
collection goes
from the gym
to the outdoors
in tons of sleek
to slouchy fits
for summer.*












HOME / COLLECTIONS / SURVIVOR / SURVIVOR JOURNEY

SURVIVOR
JOURNEY

Super thin drop protection. Journey keeps your phone safe with ultra-thin, 6.6-foot (2-meter) drop protection. No matter where you're headed, your journey begins here.

 PLAY VIDEO



