

BRANDMODELS

ANNA EASTEDEN

HAIR: RED

EYES: BLUE

HEIGHT: 5' 7"

CHEST: 34C

WAIST: 26

HIPS: 37

DRESS: 4

SHOE: 7































ORDINARY LIVING FOR EXTRAORDINARY LIVES

LUXURY

LAS VEGAS

Phenomenal FALL FASHION

Plus...

MonteLago Village Dining,
Chatting with Rita Rudner &
Navigating the Grand Canal Shoppes

February 2007 • \$5.00 • Volume 18, Number 2 • www.nailpro.com

NAILPRO



Perfect Your
Pink and
Whites

Red Hot!

Gels, polishes and more...

LAS VEGAS LIFE

GROWING A
DESERT VEGGIE
GARDEN PG 28

NEVADA'S NEXT
CITY: COYOTE
SPRINGS PG 68

GET TO KNOW
DANA AND KIM
WAGNER PG 31

LVL

SPRING AND
SUMMER
FASHION PG 60

BATALI'S
CARNEVINO AT
PALAZZO PG 90

GYROTONICS:
THE LATEST WAY
TO GET FIT PG 34

Go Green!

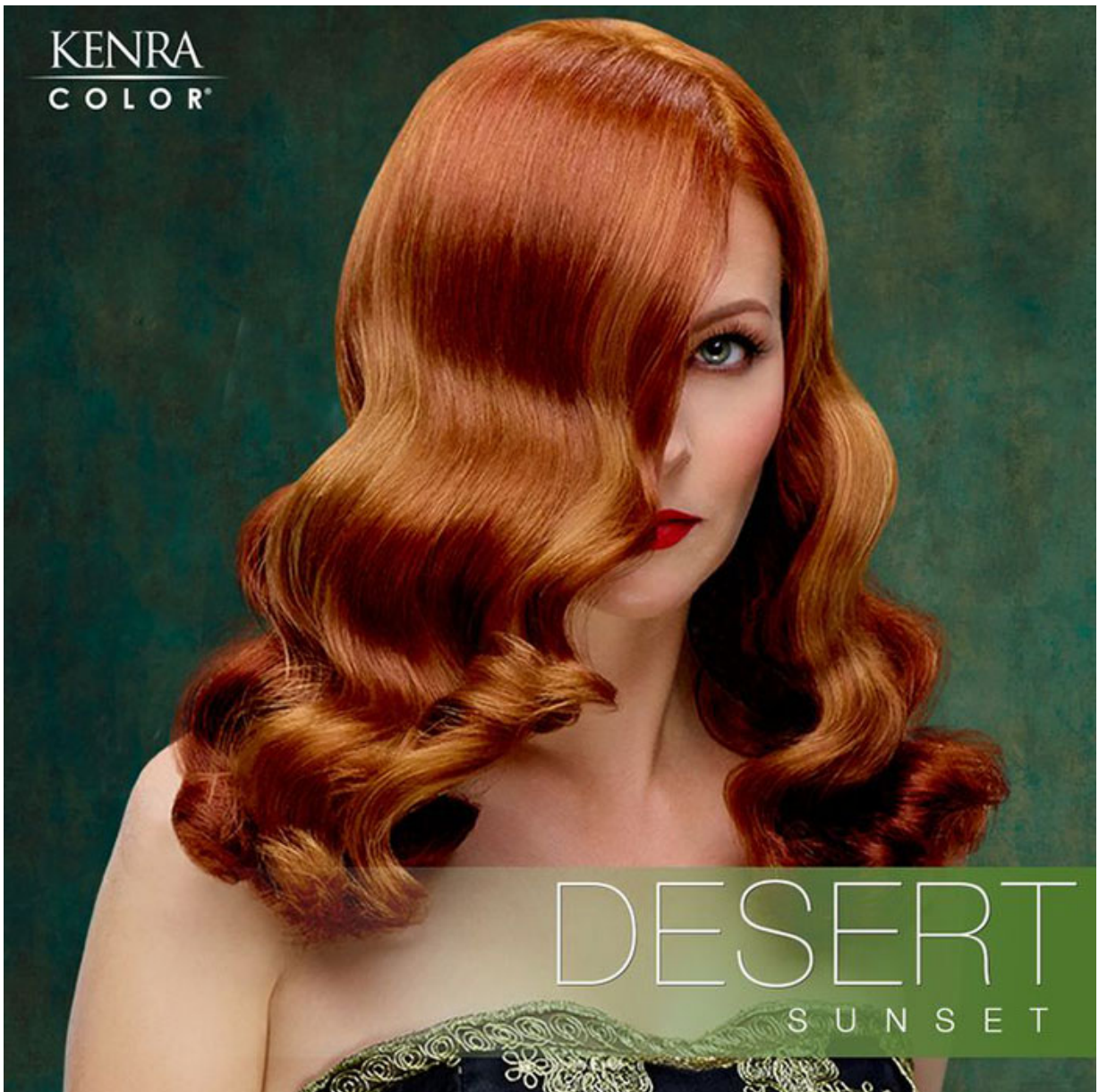
APRIL 2008

April 2008

\$3.99



0 71896 44176 5





SEEING RED

The Next Leading Lady

The starlet enchanted the crowd with her flaming tresses, as she posed like a true leading lady. The paparazzi began to shout her name but she kept her composure and we instantly knew that right in front of our eyes, a star was born.















All Rights Reserved - Anna Easteden and Jagger (c) Isabelle Ruen















