

# BRANDMODELS

## JANINE CHUA

HAIR: DARK BROWN

EYES: BROWN

HEIGHT: 5' 5"

CHEST: 32A

WAIST: 23

HIPS: 33.5

DRESS: 0

SHOE: 7









































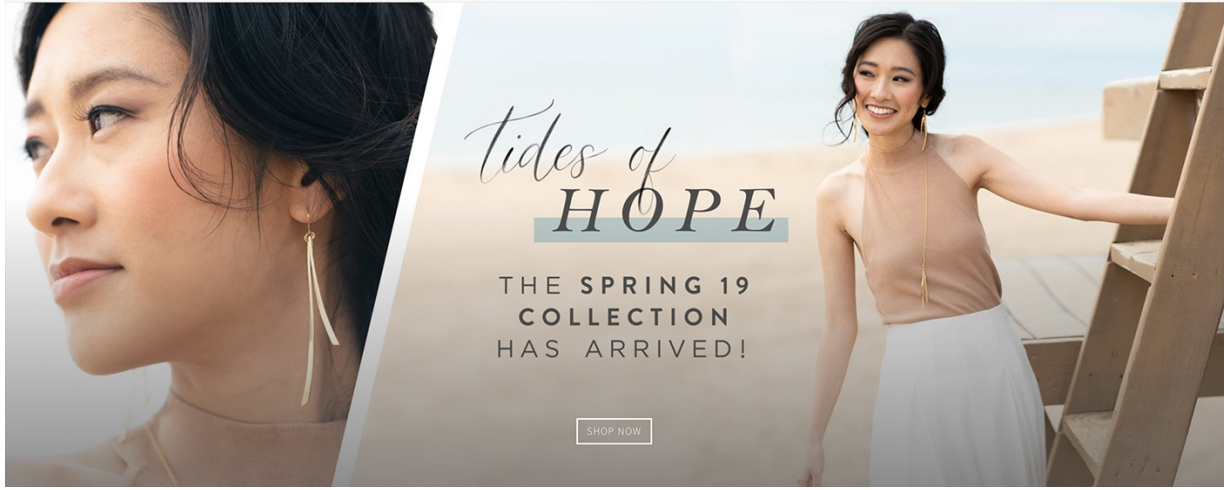












*Tides of*  
**HOPE**

THE SPRING 19  
COLLECTION  
HAS ARRIVED!

SHOP NOW









































# Life insurance? But I'm healthy.

Ironically, now is when you need life insurance the most. If something happens during your prime earning years, your loved ones don't just lose you—they also lose the financial future you're building for them. Getting term life insurance makes sure that your future is safe no matter what.

